



# NEWSLETTER

DISCOVERYDOME.COM

DISCOVER THE DIFFERENCE

APRIL 2019

*Portable Planetariums for Science Education • Leader in Educational Technology since 1999*

## AFFORDABLE

Best value system on the market  
Rent, rent-to-own, or purchase  
More dome and projection options

## ACCESSIBLE

Flexible • Portable • Easy-to-use  
One person setup • Wheelchair access  
Subtitles on demand

## AWESOME

100+ shows from all major producers  
Show fisheye, pre-warped, flatscreen, 3D  
Share the VR® - VR360 on the dome!

**April 1, 1999**

Established Space Update, Inc to distribute space science software and MTPE, Inc. to distribute earth science software and shows.

First Show: **FORCE 5**



**2006**

First airlock portable dome



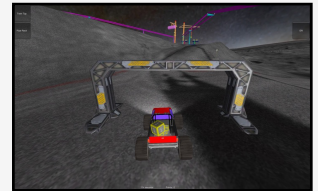
**2006**

Planetarium show **EARTH'S WILD RIDE** released



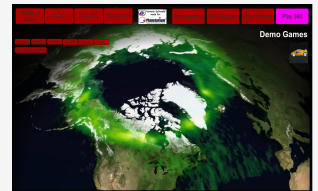
**2012**

First Dome Games



**2016**

First 360 VR in the dome



**1999**

**2009**

**2019**



**2003**

First video full-dome portable planetarium



**2007**

First dual mirror projection system

**2007**

**DINOSAUR PROPHECY** and **IMPACT EARTH** released



CELEBRATING

**20**  
YEARS

Discovery Dome offers complete planetarium systems, ready to plug-and-play: science shows and teaching materials, dome, projector, speakers, transport cases, a deep set of resources on our website, and connection to our Discovery Dome user community. Customizable systems available ranging from \$27K to \$46K.

Visit us online at [discoverydome.com](http://discoverydome.com) or contact us for sales and info at [sales@discoverydome.com](mailto:sales@discoverydome.com)

**AFFORDABLE • ACCESSIBLE • AWESOME** – *The best portable planetarium system in the world!*

## NEW PLANETARIUM SHOWS

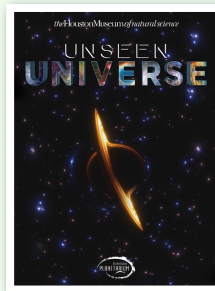
Produced by the *Houston Museum of Natural Science*



### TO DEFY GRAVITY

The 24 Apollo astronauts who reached lunar orbit are the only humans to escape the bonds of Earth's gravitational pull. In **To Defy Gravity** we share their exhilarating adventure on the Moon and create a realistic future lunar colony where humans could enjoy this low gravity world. Then we explore the other worlds in our solar system, imagining how we might live and have fun there. Finally we look into the universe to understand gravity and appreciate its power in shaping our cosmos and determining our destiny. The moon is just the beginning of our exploration of gravity in action. This is an all-ages adventure with a universe of new discoveries.

might live and have fun there. Finally we look into the universe to understand gravity and appreciate its power in shaping our cosmos and determining our destiny. The moon is just the beginning of our exploration of gravity in action. This is an all-ages adventure with a universe of new discoveries.



### UNSEEN UNIVERSE

We are creatures of sight, always trying to see farther and in greater detail – exploring the distant universe far beyond our vision. Huge instruments in space have become our new eyes on the cosmos, tuned to all the wavelengths of light. Airborne telescopes and observatories on high mountain peaks also watch the universe through Earth's clearest

skies. Radio ears as big as a football stadium capture the lowest frequencies of light. Detectors deep underground see the most elusive particles. In Unseen Universe, we experience a cosmic drama playing in the heavens above, with scenes and characters we've never seen before.

### APOLLO AT 50!

We are delighted to be part of the Rice University and NASA efforts to highlight the 50th anniversary of Apollo. Our founder Professor Patricia Reiff received her Ph.D. at Rice University analyzing data from the CPLEE instrument on Apollo 14. With support from the NASA Space Science Education Consortium we have created (w/ Don Davis) two full-dome animations:



35s recreation of the Apollo 17 night launch



25s recreation of the Apollo 17 LEM ascent from lunar surface

These animations are available FREE to planetariums and educators, in pre-warped, flatscreen and fisheye formats up to 4000x4000 pixels. Contact Dr. Reiff ([reiff@rice.edu](mailto:reiff@rice.edu)) for planetarium versions. You can view them online through the [ePlanetarium YouTube channel](#) (or thru the Rice link below).

Rice and NASA also are holding a series of special lectures and events highlighting the Apollo missions. Links to watch the live and archived presentations are available at:

[space.rice.edu/apollo/](http://space.rice.edu/apollo/)

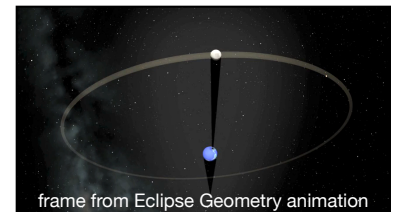
This website will be updating with new material and new links as the Apollo celebration continues.

### ECLIPSE ANIMATIONS

Eclipse animations we created for NASA in 2017 have been seen millions of times on the web and TV. View them (and Subscribe) on our [ePlanetarium YouTube channel](#). These

“evergreen” clips can be used again and again to explain lunar and solar eclipses. Access them and other material on eclipses at Dr. Patricia Reiff’s eclipse page: [space.rice.edu/eclipse/](http://space.rice.edu/eclipse/)

Dr. Reiff is a veteran of 16 centerline eclipses (14 total, 2 annular). She will be leading upcoming solar eclipse tours in Chile (2019), Argentina (2020) and Antarctica (2021 cruise), all through [EclipseTours.com](http://EclipseTours.com).



frame from Eclipse Geometry animation



### NEWSLETTER SUBSCRIPTION SIGN-UP

Don't miss all the latest news!

Discovery Dome News

<http://bit.ly/DDomeNews>

Want to learn more about our products, shows and events? Join our Discovery Dome news group and get updates sent to your email. NOTE: If you are an existing customer, contact us to join our customer "FullDome Users Network" list instead.

e-Teachers

<http://bit.ly/DDomeTeachers>

Our "e-teachers" email list brings you notices of workshops and courses, astronomical events, NASA news for educators, cool software, and other opportunities.

## FREE ONLINE TRAINING

for any of our software packages at  
[discoverydome.com/training](http://discoverydome.com/training)